

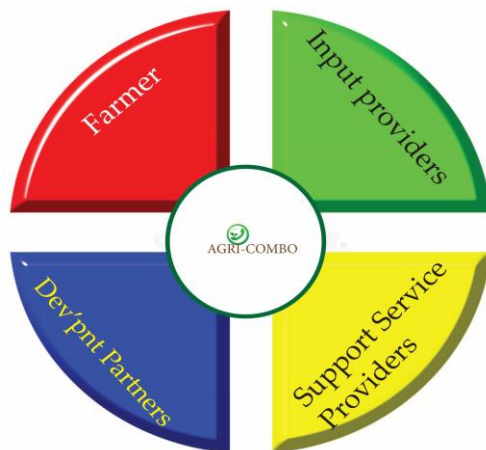
AGRICOMBO CALL SYSTEM REG. FORM

Introduction

Agri combo call system Mimics the role of an in-field Agric-extension officer in the face to face.

- ✓ *“Combo” means Combination*
- ✓ *Mobile phone based consultancy service*
- ✓ *System nodes – Farmers, IC’s, Station, Service providers*
- ✓ *Centralized & strengthened through collaborative efforts with a range of actors (Agro-input suppliers, Insurers, Ag. Experts, Financial Institutions, Agri-processors etc.)*

System nodes



Goal:

Enhancing timely farmer access to agro-information through agri-combo call system

Objectives

- To connect farmers to relevant agriculture support service providers & value chain actors
- To enhance timely access to filtered, digested and repackaged (customized) information on *production, postharvest handling and marketing*

Rationale

- *System operation is a collective effort of Agronomists , researchers, land use planners, computer and soft ware engineers etc.*
- *Caters for feedback to enable establishing trust & address the information gap*
- *Agri-combo builds on NAEP 3rd strategic objective & principles to integrate agricultural support services. (partnerships, decentralization & inclusive participation)*

Steps in Agri combo

1. *Registration; This constitutes farmer digital profiling, location, agents and service providers. ID's are issued to farmers.*
2. *Verification and scrutinization of information and actors; this is to ensure quality of services, products.*
3. *Training; (Video mediated training in production, postharvest handling and marketing) targeting cooperative farmers.*
4. *Access to system information.*

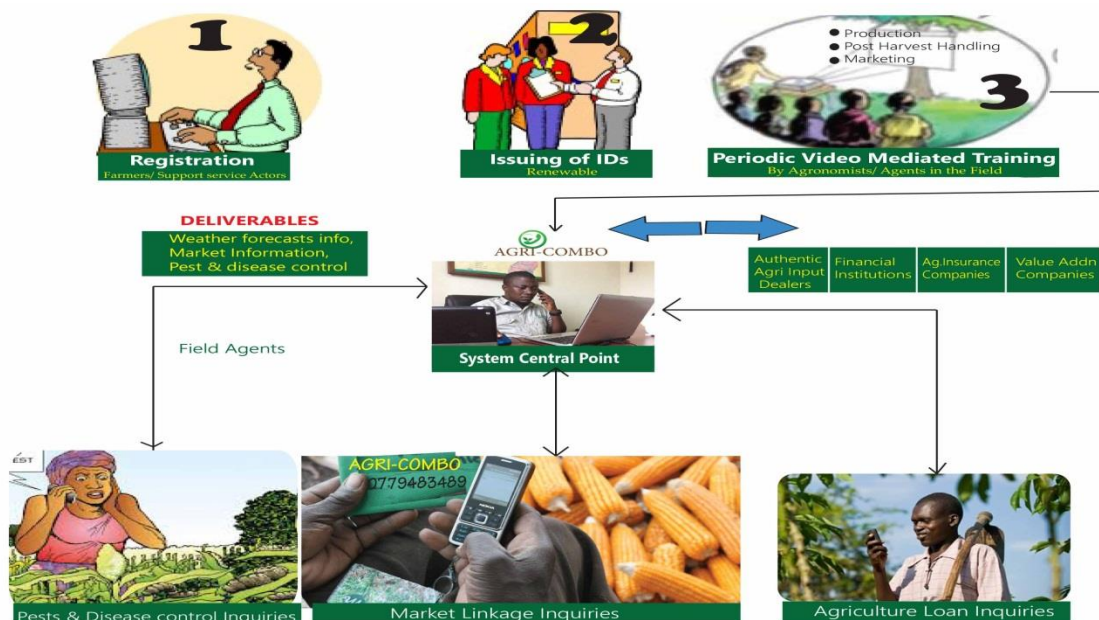
System Deliverables

- *Weather forecast information (for those in open field/ advocating for low cost green houses for Vegetable Production)*
- *Agro-training & information keen interest to video mediated (production, postharvest handling & marketing)*
- *Uganda Agriculture Insurance Scheme (Agro-consortium linkages)*
- *Links to suppliers of genuine agro-inputs*
- *Market information*
- *Advocacy and linkages with financial institutions*

Mode of delivery

- *Short Message Service (SMS); System shall push information on weather, market prices & best practices in local languages*
- *Calls; Main communication channel since farmers prefer speaking directly to experts than IVRs*

Both methods deliver feedback from farmers



AGREEMENT FORM IN THE MATTER OF THE AGRI COMBO CALL SYTEM

This agreement form is betwen Bifriens Investments Ltd and

(Farmer/Farming Institution’s Name)

Section A (Area of farming required)

.....

Acrage.....

Large scale farmer

small scale farmer

group farmers (No.)

Location

Rural

Urban

Both

DECLARATION

As per the options chosen I /we shall pay Bifriens Investments Ltd an annual subscription to the agricombo call system of..... effective this day.....of.....20..... For a renewable period of 5 years

NB: costs to the farms and farm inputs are to be provided by the farmer, however Bifriens investments mandates fair service providers to reduce cost of production for the farmer and make profit

Signed by;

Name.....

.....

Sign.....

.....

For Bifriens Investments Ltd

For (farmer/ Farmer Institutions Name)